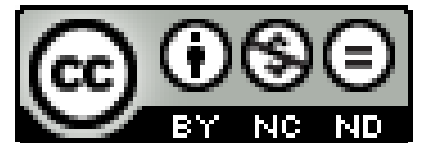




KBR  Koester de tijd
Protégeons le temps



Towards a Digital Data Strategy for KBR: a cross-departmental collaboration

Led by Julie M. Birkholz & Sally Chambers

In cooperation with Ann Van Camp, Brecht Deseure, Fien Messens,
Frédéric Lemmers, Friedel Geeraert, Hannes Lowagie,
Marie-Sophie Bercegeay, Nadège Isbergue, Piet Janssens,
Sophie Vandepontseele, Sven Lieber, Tan Lu, Thuy-An Pham,
Fran Stroobants, Daan van Heesch, Isabelle Gribomont

As librarians, collection managers, cultural heritage experts and researchers, we are constantly confronted with **information**. Not only how to make sense of it in the human mind! But also easily be able to reference, structure, organize and recall it with the help of computers.

What is **data**?

From the moment we have this information in a format that a computer can “read” we have data. Specifically **machine-readable data**.



KBR maintains lots of materials and **data** from analogue/source documents, digital objects or versions, born-digital objects, metadata on these objects, these collections as data (e.g. full-text, images), etc...

Each of these are different types of data, that have **specific** characteristics and are often maintained by **diverse** groups of experts, physically stored in **different** places and ways, and thus have different priorities, challenges and opportunities.

Challenge

The **increasing digitization of society** and resulting increased digitization of library collections results in KBR needing to develop processes to **manage** an insurmountable amount of diverse document and data types.

The challenge is to make these collections **accessible** not only for physical consultation but also digitally as images and increasingly as data. This shift for providing collections available in a machine readable format- or collections as data, demands **new** processes and practices.

From discussion to Action Plan

- Discussion started in December 2020 in identifying what is research data;
- It expanded to a cross-departmental working group to identify opportunities & threats; and weaknesses & strengths of all digital data
- Spring 2021 it became integrated into the strategic development plan of KBR for 2021 - 2024



**Objectif opérationnel KBR4.2. : Élaborer
et mettre en œuvre une stratégie de
données numériques
= digital data strategy**

KBR Digital Data Strategy

The KBR Digital Data Strategy outlines a proposal for how to manage the variety of this *data* (e.g. diverse formats needed for different document types).

This includes:

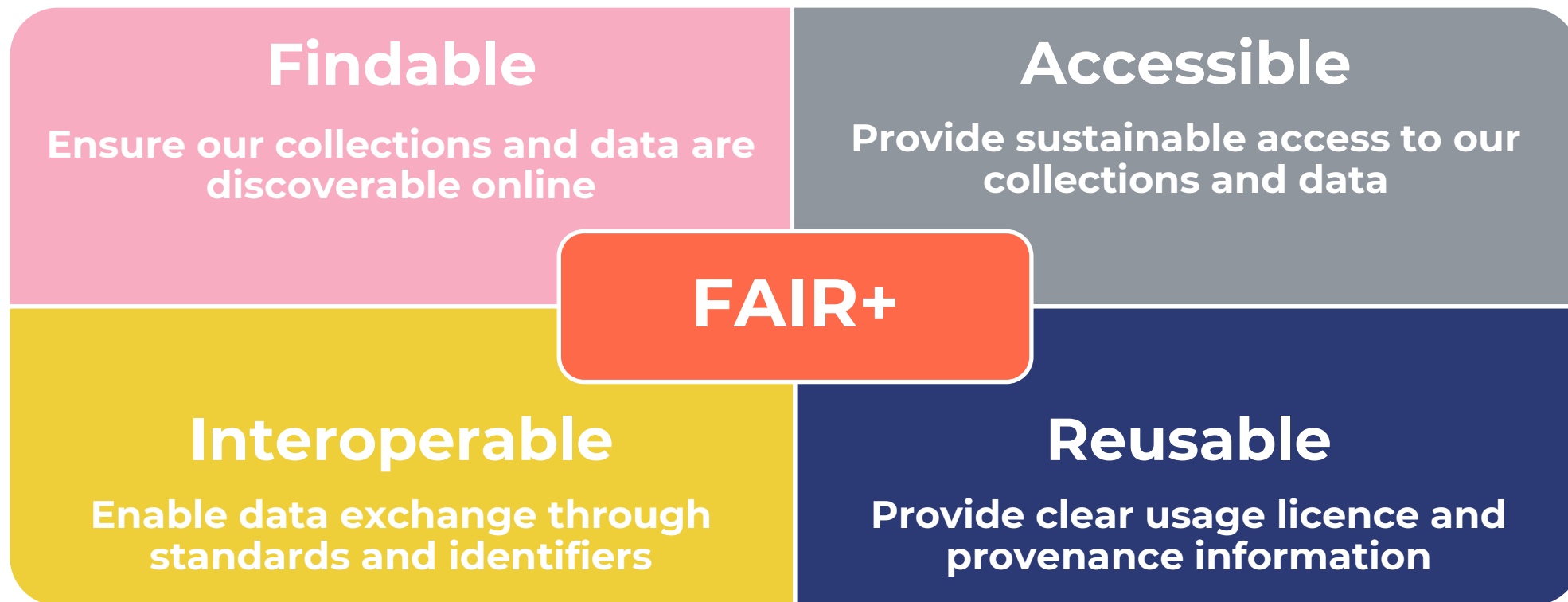
- the *volume* (e.g. increased computer storage demands to ensure accurate provenance and high level information on the source documents, digitized versions, and data),
- the *veracity* (e.g. ensuring quality and availability to users in new ways),
- *rights management*,
- and in some cases an increased *volume* of requests and demands of these services (e.g. instead of a researcher consulting one book, they request full-text of one million books).

Three Priorities

We identify three aspects of our collections that will take priority in this first phase of the digital data strategy. These include:

- 1 - **Belgian collections** - e.g. Belgian authority files;
- 2 - **Unique collections**- collections that only KBR has, that are not necessarily Belgian, but are internationally unique or well-known;
- 3 - **Contextual collections** - collections related to exhibitions or events; AND collections that support the quality of research and authenticity of the two previous priorities - e.g. primary and secondary sources and e-resources.

Objective: FAIR+ data



+ = Preservation

Data types @ KBR

- Bibliographic data
- Heritage data
- Authority data
- Digital data
- Born-digital data
- Electronic resources
- Research data
- Lab data (code)
- Collections as data

Bibliographic Data

- information in the library catalog that describes a specific resource, e.g. descriptions of the analogue or digital objects in the collections

KBR 

General catalog

Collections ▾

Authors ▾

Title

Travels and travelogues in the Middle Ages

edited by Jean-François Kosta-Théfaine

Author(s)

[Kosta-Théfaine, Jean-François. Publishing director](#)

ISBN

978-0-404-64168-9

Imprint

New York : AMS Press, 2009

Publisher

[AMS Press](#)

Heritage Data

- information which describes in depth the broad range of types of heritage objects collected by KBR using international standards that cannot be described within the current bibliographic data framework



Type of objet	<u>Médaille</u>
Geographic area/pe...	Belgique
Date	1969
Ruler	<u>Baudouin I</u>
Artist	<u>Somers, Francine (1923-)</u>
Artist	<u>Fisch (atelier)</u>

Obverse: legend	[FS]
Obverse: description	Tête de Pieter Bruegel presque de face
Reverse: legend	PIETER BRUEGEL / 1569 / 1969 / 950

Authority Data

- information derived from bibliographical data that specifies authority on names of people, places, things, and concepts in a standard format that can be shared with others



<https://www.kbr.be/en/isni/>



<https://www.kbr.be/en/projects/beltrans/>



Centre d'archives sur les médias et l'information
Centrum voor Archieven over Media en Informatie

<https://www.kbr.be/en/projects/camille/>

Digital Data

- information on digital files of resources (for records of digitization see meta-data)



Born-digital

- **information and primary resources of documents that are inherently digital**

Web & Social
media archiving



<https://www.kbr.be/en/projects/promise-project/>
<https://www.kbr.be/en/projects/besocial/>
<https://www.kbr.be/en/agenda/wanted-social-media-data/>

Digital legal deposit



<https://www.depotlegal.be/>
<https://www.wettelijkdepot.be/>

Laboratory for Electronic Literature (LabEL)



<https://www.kbr.be/en/projects/laboratory-for-electronic-literature/>

eResources

- **resources that are available digitally, that we as KBR do not necessarily maintain as source (analoge) documents (e.g. databases, periodicals, e books)**

KBR offers several types of electronic resources, mainly in the field of human and social sciences. These external e-resources are purchased by KBR and are available, free of charge, to holders of a reader's card or an electronic resources subscription.

You have access to more than 120 databases, 5.500 e-journals and 65.000 e-books. The electronic resources are accessible via the online catalogue or via this overview:

DATABASES

E-BOOKS

E-JOURNALS



Research Data

- **results that are derived from the collections, that can include records of the qualitative results - e.g. a dictionary or reference for a close reading; to quantitative findings, as well as the publications.**

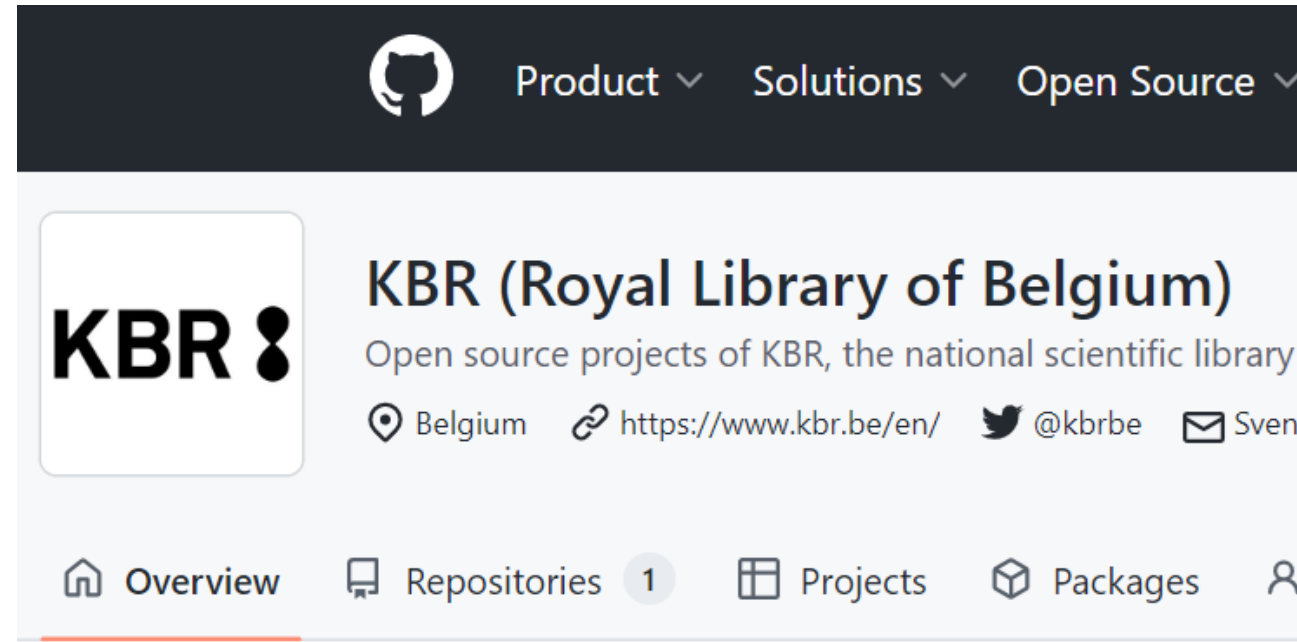
Research data repository – SODHA

SODHA is a data archive for social sciences and digital humanities in Belgium as well as a service provider that is part of European Social Science Data Archives (CESSDA).


The aim of SODHA is to ensure the **conservation** of research data produced by social sciences and digital humanities. Researchers can **deposit** their datasets, which will be **preserved** in the long term and receive a **DOI**, making them discoverable. Using the search engine of the Dataverse software, researchers can **search the collections** of SODHA and find documents.

Lab data

- **Openly available code, tools, tutorials, specifications, and examples for reproducible insights based on KBR-related data, and high-quality research data management**
- **<https://github.com/kbrbe>**



Product Solutions Open Source

KBR 

KBR (Royal Library of Belgium)
Open source projects of KBR, the national scientific library

Belgium <https://www.kbr.be/en/> @kbrbe Sven

Overview Repositories 1 Projects Packages

Collections as Data

- information that reflects the machine readable contents of resources (e.g. full-text)

A screenshot of a Windows File Explorer window showing a list of files and folders. The window title is 'This PC > X09 D02 > Google Drive > Data'. The list includes folders like 'Favorites', 'Downloads', and 'Documents', and files such as 'A Leisure Moment', 'Alma - Bunker Park', 'Anna Moore', 'Baker Road Farm', 'Baby's Book', 'Benedict Business', 'Bones', 'Bones - Modified', 'Book 11 Love', 'Bookmarked For Later', 'Books - A True Story', 'Cubally Target', 'Cultural Book Reviews', 'Chapter by Chapter', 'Constitutional Checkbook', 'CorkMuggery', 'Dance of the Deer', 'Dan Pearce', 'Elin Filson', 'Eyes, Stars & Stripes', 'Felix in Diner Intention', 'Fire and Ice', 'Fit Body Fit Soul', 'Foundation - Response Design Framework', 'Gone With the Wind', 'Graphics', 'Hampstead-Mary, Texas Guide', 'Hazel One-Month', 'Holy Shona', 'La Remonchi', 'Jenny's Babies', and 'Jenny Mobile Apps Business Cards'. Each file entry shows its name, date modified, and type.

See also:

<https://www.kbr.be/en/projects/data-kbr-be/>

<https://www.kbr.be/en/projects/digital-research-lab/>

<https://www.kbr.be/en/projects/data-science-lab/>

In practice



F

indable

A

ccessible

I

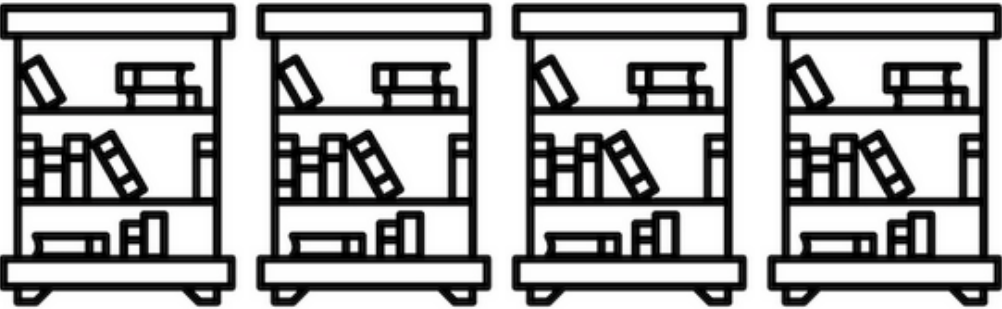
nteroperable

R

eousable



Collections as Data: “Always Already Computational”

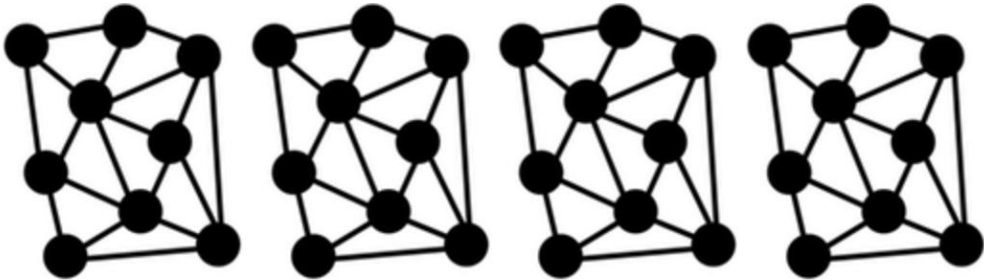


... and “Part to Whole”

Padilla, Thomas, Allen, Laurie, Frost, Hannah, Potvin, Sarah, Russey Roke, Elizabeth, & Varner, Stewart. (2019, May 22). Final Report --- Always Already Computational: Collections as Data (Version 1). Zenodo. <http://doi.org/10.5281/zenodo.3152935>

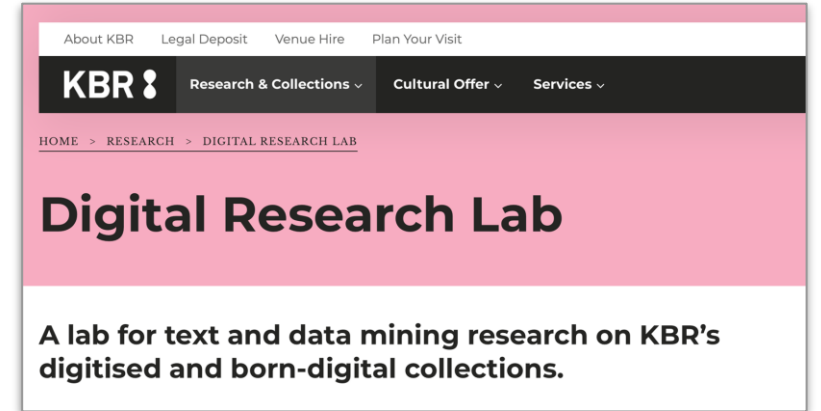
Always Already Computational: Collections as Data final report and project deliverables:

<https://osf.io/mx6uk/wiki/home/>

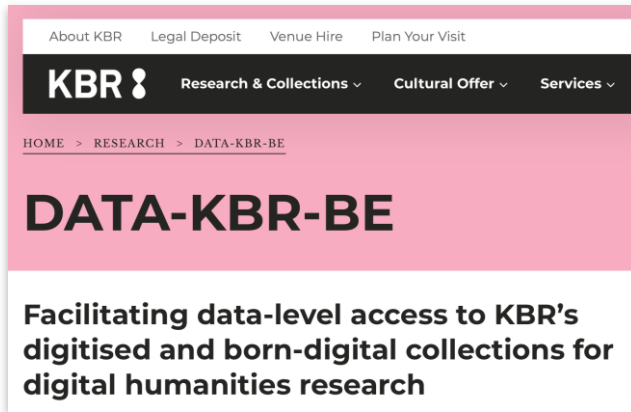


<https://collectionsasdata.github.io/part2whole/>

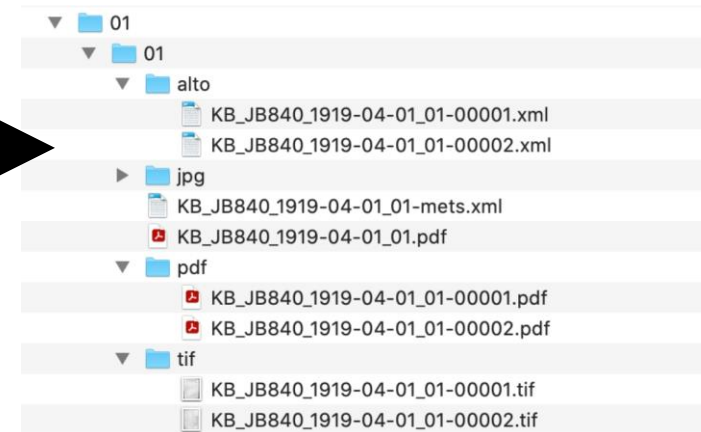
Collections as Data @ KBR



<https://www.kbr.be/en/projects/digital-research-lab/>



<https://www.kbr.be/en/projects/data-kbr-be/>



Methods for Data Extraction

Vooruit, 24 November, 1944 - 1950

The screenshot shows an Excel spreadsheet with the following data:

IDN*	Publication date	Publication date From	Publication date To	Sequence number	Collation	Collation sequence number	MIME	Orig	Client
15981364	24-11-1944						jpeg	MIME	
	24-11-1945						jpeg	Allowed values: tiff, jpeg, png, pdf, xml, mp3, wav, mp4	
	24-11-1946						jpeg	You can enter several values separated by a comma.	
	24-11-1947						jpeg		
	24-11-1948						jpeg		
	24-11-1949						jpeg		
	24-11-1950						jpeg		

The screenshot shows the KBR MediaStock website interface. At the top, there is a navigation bar with the URL WWW.KBR.BE and a user profile for 'schambers'. The main header features the 'KBR MEDIASTOCK' logo and navigation links for 'Home', 'Search', and 'My downloads'. A 'Logout' button is also present.

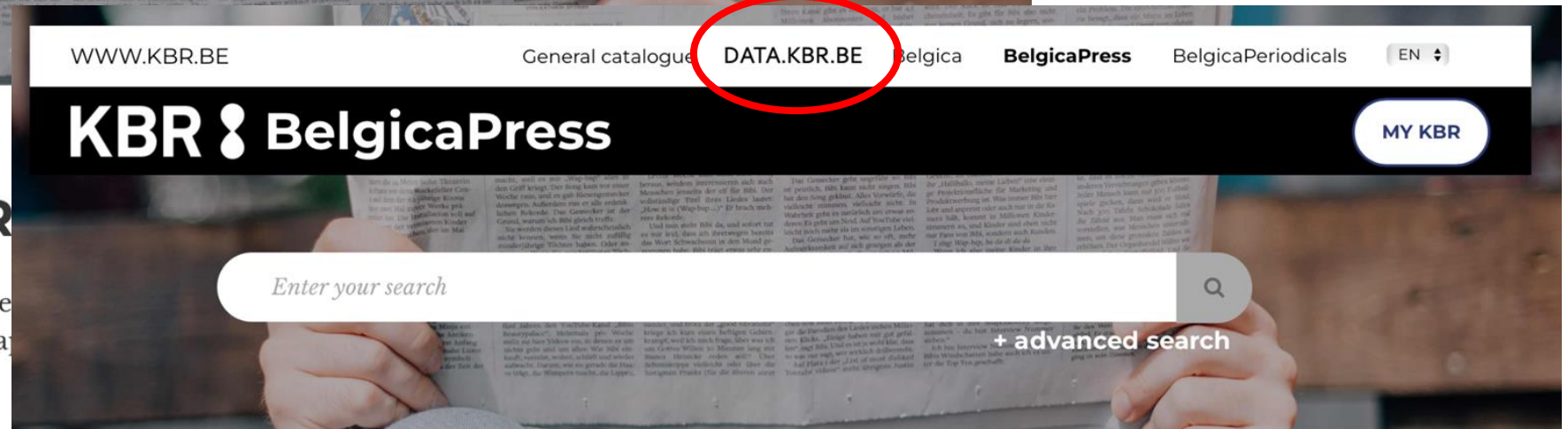
Below the header, there are two search options: 'Simple search' and 'Excel search', with 'Excel search' being the active selection. A green confirmation message states: 'Your Excel search request was saved!'.

At the bottom, there are two buttons: 'My searches' and 'New search'.

The search results are displayed in a table with the following columns: 'Filename', 'Date', and 'Status'.

Filename	Date	Status
STOCK_searchExcel_EliasVooruit.xlsx	2022-07-16 11:34	New

Towards the 'DATA-KBR-BE' platform



Search in KBR

The portal BelgicaPress gives you access to 121 Belgian newspapers referred to as "major newspapers", most of which appeared daily (1814-1970).

Search in KBR's digitised newspapers

The portal BelgicaPress gives you access to 121 Belgian newspapers referred to as "major newspapers", most of which appeared daily (1814-1970).

6 goals of the strategy

- Improve data **quality**
- Implement **sustainable** data management practices
- Improve the **findability** of data
- Improve the **accessibility** of data
- Improve the use of data by extending **data services**
- Improving **digital data literacy**.
 - Enhance digital data literacy through the organization to ensure the long term sustainability of the goals.

Next Steps

Internal Roadshows @ KBR: December 2022 & January 2023

KBR Digital Data Strategy V.5

Prepared for final version to KBR staff 2022 November 14. This document is the reference document and will be translated upon completion into Dutch and French.

This strategy was prepared by the transversal Digital Data Strategy Working group, as part of the Strategic priorities of *KBR's Action Plan 2022 – 2024*. The working group is led by Julie M. Birkholz, Digital Research Lab; & Sally Chambers, data.kbr.be; in collaboration with (in alphabetical order by first name) Ann Van Camp, Brecht Deseure, Daan van Heesch, Fien Messens, Fran Stroobants, Frédéric Lemmers, Friedel Geeraert, Hannes Lowagie, Isabelle Gribomont, Marie-Sophie Bercegeay, Nadège Isbergue, Piet Janssens, Sophie Vandepontseele, Sven Lieber, Tan Lu, and Thuy-An Pham. This was developed from discussions of this working group starting from January 2020 – present. See the working methods described below for how this group functions.

This document serves to present the KBR Digital Data Strategy with the aim to receive feedback from staff to further develop the strategy. By strategy we mean a plan for how we will manage data and also where and how to prioritize this within the organization. Presentations on this strategy will be given to each section on the following dates: 6 and 8 December (time to be determined with the section head). The working group is open to all KBR staff, if you would like to join this working group and/or have questions or feedback on this strategy please contact: Julie.Birkholz@kbr.be.



**Ready for publication:
Autumn 2023!**

Thank you !

Check out our research projects:

<https://www.kbr.be/en/research/>

Contact us if you are interested in cooperation!

Julie.Birkholz@kbr.be

Sally.Chambers@kbr.be

